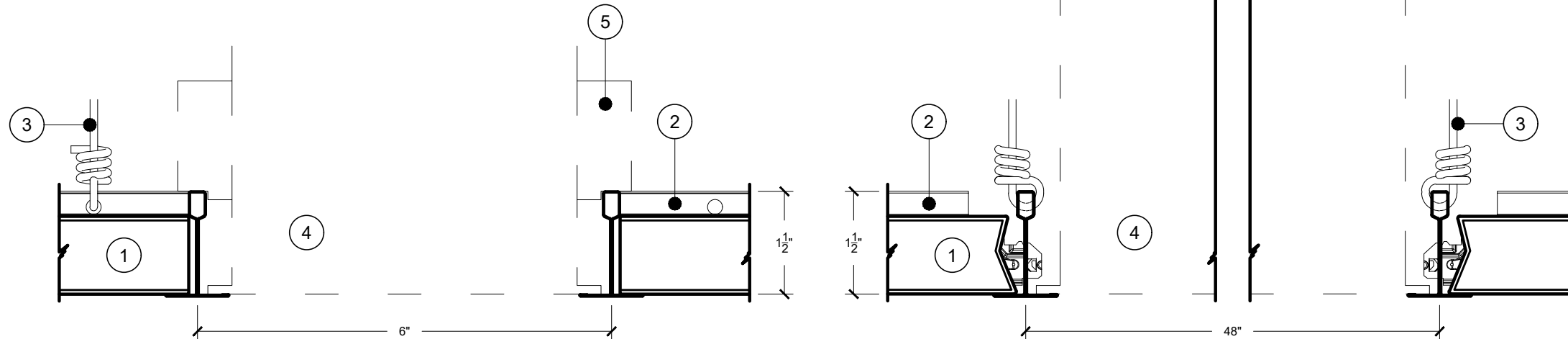
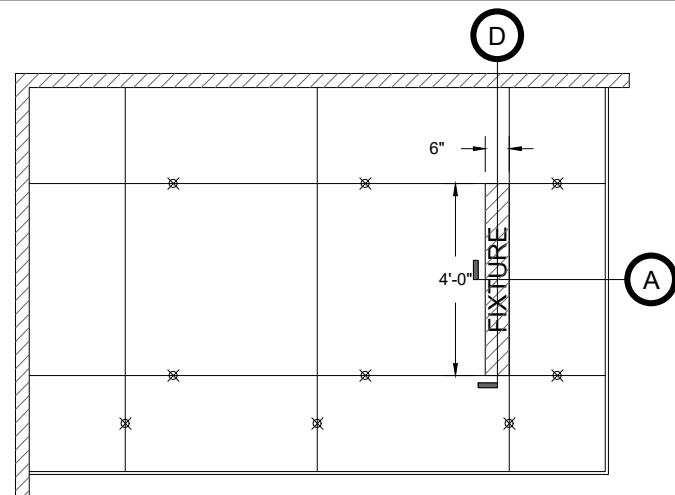


RCP KEY



(A)

LAY IN PANEL  
RECESSED FIXTURE

(D)

**MODULAR LIGHT FIXTURE  
LENGTH RUNNING PARALLEL TO  
CLIPPED EDGE**

**VARIABLE LIGHT FIXTURE &  
FIXTURE LOCATION - DETAILS  
REMAIN THE SAME**

NOTES

- 1. LAY IN PANEL
- 2. 15/16" GRID
- 3. 12GA HANGER WIRE
- 4. RECESSED FIXTURE \*
- 5. FIXTURE SUPPORT (BY FIXTURE MANUFACTURER)

\*FIXTURE TO BE INDEPENDENTLY SUPPORTED TO STRUCTURE ABOVE(BY OTHERS)

SEE PRE-QUALIFIED MEP COORDINATION FIXTURES [HERE](#).



These drawings show typical conditions for installing the CertainTeed Ceilings product shown. They should not be construed as a substitute for an architectural or engineering design and don't reflect the unique requirements of local codes, laws, statutes or regulations that may be applicable for a specific installation.

CertainTeed Ceilings assumes no liability for the accuracy or completeness of the drawings for a specific installation or the fitness of the drawings for a particular purpose. The user is advised to consult with local licensed design professionals in order to assure compliance with all legal requirements.

CertainTeed is not licensed to provide professional engineering or architectural services.

QUESTIONS? CALL (800) 233-8990

TECHSTYLE CEILING SYSTEM: LAY IN FIXTURE RECESSED

2/25/2020

DRAWN: J888053

SCALE: AS NOTED

SHEET 1 OF 1