

## FlintBoard™ Polyisocyanurate Roof Insulation Products

FlintBoard™ roof insulation products from CertainTeed are proven energy-efficient systems. Available in a variety of thicknesses, FlintBoard features long-term thermal resistance (LTTR) values from 6.0 to 25.0. FlintBoard reduces energy demands and is compatible with most roofing membranes.

### Performance

All FlintBoard products are manufactured with closed-cell polyisocyanurate, which ensures:

- Dimensional stability for years of performance
- High R-values per inch for maximum energy efficiency
- Superior ratings in fire safety performance
- Less weight for easy handling and installation

### Adaptability

CertainTeed polyisocyanurate roof insulation systems are engineered for use with:

- Built-up roofing systems
- Modified bitumen roofing systems
- Single ply systems
- Shingles
- Tile
- Slate

### Versatility

There's a FlintBoard insulation product suitable for the following uses:

- Insulation for cold storage and metal building applications
- Positive drainage tapered systems
- Composite polyisocyanurate systems (available with perlite high density wood fiberboard or DensDeck®), which eliminate the need for cover boards and reduce installation labor

CertainTeed FlintBoard polyisocyanurate roof insulation products are environmentally sensitive and available for virtually every type of construction system.

**Highest R-value per inch of any insulation**

**EPA compliant –**

**Zero ODP expansion agents used**

**Post-industrial recycled content**

**Complies with ASHRAE standards**

**Qualifies for LEED certification credits**

**CertainTeed**  
SAINT-GOBAIN

**Commercial Roofing**

**ASK ABOUT ALL OF OUR OTHER CERTAINTEED® PRODUCTS AND SYSTEMS:**

ROOFING • SIDING • TRIM • DECKING • RAILING • FENCE • FOUNDATIONS  
GYPSUM • CEILINGS • INSULATION • PIPE

CertainTeed Corporation  
P.O. Box 860  
Valley Forge, PA 19482

Professional: 800-233-8990  
Consumer: 800-782-8777  
[www.certainteed.com](http://www.certainteed.com)  
<http://blog.certainteed.com>

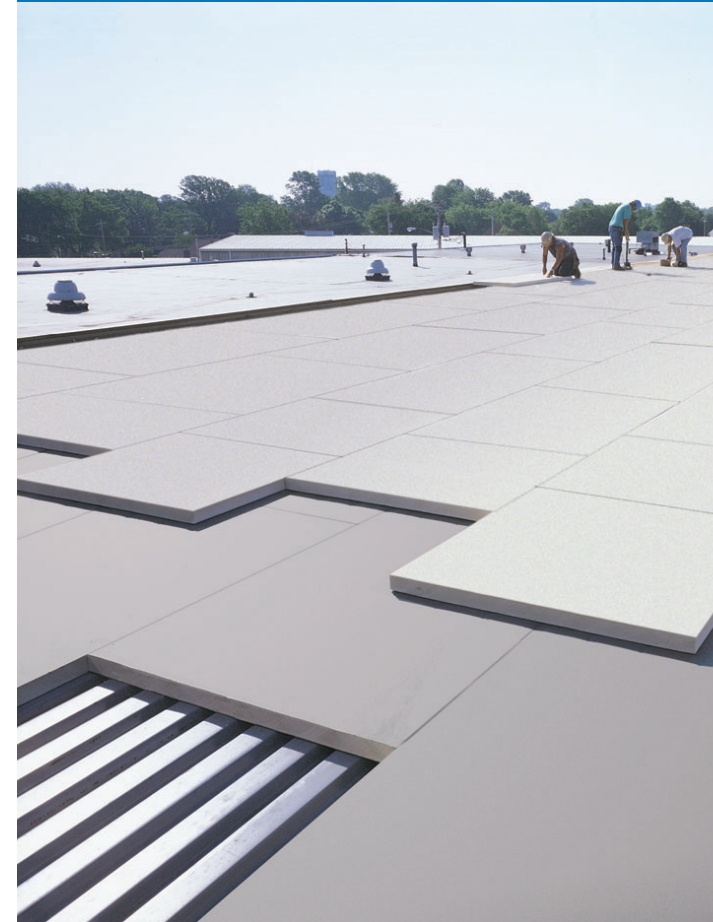
Comm-252, © 11/12 CertainTeed Corporation, Printed in the U.S.A.

  
SAINT-GOBAIN

**CertainTeed**

# FlintBoard™

**Polyisocyanurate  
Roof Insulation Products**



**CertainTeed**  
SAINT-GOBAIN

### FlintBoard ISO (and ISO-T)

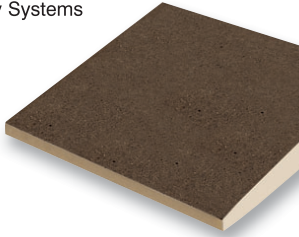
*Polyisocyanurate roof insulation*

**Applications:**

- BUR, Modified Bitumen, Single Ply Systems

**Features:**

- 4' x 4' and 4' x 8' panels
- Thicknesses of 1.0" – 4.0"
- UL Class A, FM Class 1
- Standard black-faced facer
- 20 and 25 psi
- Available in tapered panels



### FlintBoard ISO WF (and ISO-T WF)

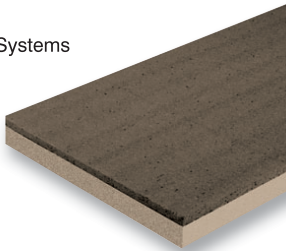
*Polyisocyanurate bonded to 1/2" wood fiberboard*

**Applications:**

- BUR, Modified Bitumen, Single Ply Systems

**Features:**

- 4' x 4' and 4' x 8' panels
- Thicknesses of 1.5" – 4.5"
- UL Class A, FM Class 1
- 20 and 25 psi
- Available in tapered panels



### FlintBoard ISO Plus (and ISO-T Plus)

*Polyisocyanurate composite roof insulation with laminate perlite*

**Applications:**

- BUR, Modified Bitumen, Single Ply Systems

**Features:**

- 4' x 4' and 4' x 8' panels
- Variety of thicknesses
- UL Class A, FM Class 1
- Available in tapered panels



### FlintBoard ISO F

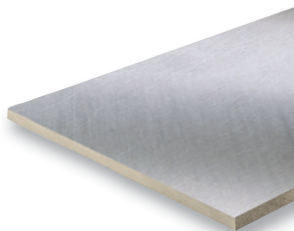
*Flat polyisocyanurate bonded to trillaminare foil*

**Applications:**

- Single Ply Systems: Ballasted, Mechanically Attached only

**Features:**

- 4' x 8' panels
- UL Class A, FM Class 1
- 20 and 25 psi



### FlintBoard ISO CV

*Cross ventilating polyisocyanurate roof insulation*

**Applications:**

- Non-insulated cathedral or vaulted ceilings, exposed ceiling designs under steel, wood or tongue and groove decks, log homes, post and beam construction
- Ideal for steep slope applications 3:12 or greater

**Features:**

- Bottom layer polyisocyanurate
- Middle layer of wood spacers
- Top layer OSB or plywood
- Thicknesses of 2.5" – 6.0"
- Standard 1" airspace, 1.5" and 2" also available
- Available with top substrates of 7/16", 5/8" OSB, 5/8", 3/4" plywood
- 20 and 25 psi
- Not a structural panel



### FlintBoard ISO NB

*Polyisocyanurate bonded to OSB (Oriented Strand Board)*

**Applications:**

- Suitable for new construction or re-roofing where a durable insulating panel is needed under tile, slate or a heavyweight shingle
- Single Ply Systems

**Features:**

- 4' x 4' and 4' x 8' panels
- Thicknesses of 1.0" – 5.0"
- UL Class A, FM Class 1
- Standard black-faced facer
- 20 and 25 psi
- Available in tapered panels



### FlintBoard ISO DD

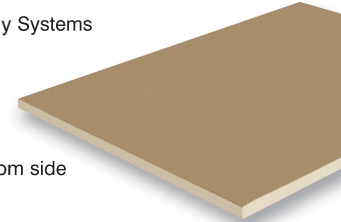
*Polyisocyanurate bonded to a coated glass facer for direct to wood deck applications*

**Applications:**

- BUR, Modified Bitumen, Single Ply Systems

**Features:**

- 4' x 4' and 4' x 8' panels
- Variety of thicknesses
- UL Class A, FM Class 1
- Fiber-reinforced felt facer on bottom side



### FlintBoard ISO Cold (and ISO-T Cold)

*Polyisocyanurate bonded to a coated glass facer*

**Applications:**

- Designed for Cold Applied and Spray Applied applications
- BUR, Modified Bitumen, Self-adhered and Single Ply Systems

**Features:**

- 4' x 4' and 4' x 8' panels
- Thicknesses of 1.0" – 4.0"
- UL Class A, FM Class 1
- Mold resistant polymer coated facer – moisture resistant
- 20 and 25 psi
- Available in tapered panels



## Typical Physical Property Data Chart — Polyisocyanurate Foam Core Only

Property	Test Method	Value
Compressive strength	ASTM D1621 – ASTM 1289-06	20 psi* minimum – (138kPa, grade 2)
Dimensional stability	ASTM D2126	< 2% linear change (7 days)
Moisture vapor transmission	ASTM E96	< 1 perm (85.0ng/[Pa•s•m <sup>2</sup> ])
Water absorption	ASTM C209	< 1% volume
Flame spread (foam core)	ASTM E84	40-60
Service temperature	—	-40° to 200°F

\*Also available in 25 psi minimum, grade 3