

CertainTeed silentFX® QuickCut

Noise-Reducing Gypsum Board

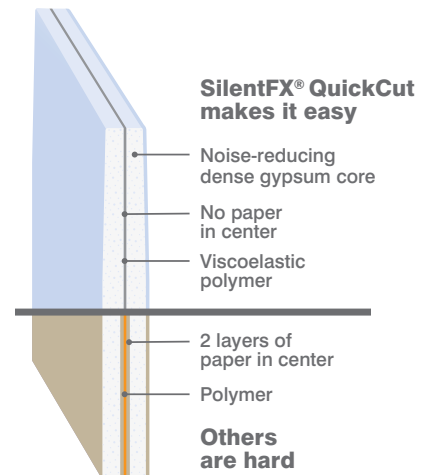


Designed to score and snap for faster installation and lower labor costs

Enhanced noise-reducing gypsum and a sound-dampening viscoelastic polymer are combined in one board to reduce sound transmission between adjoining spaces.

Performance Features

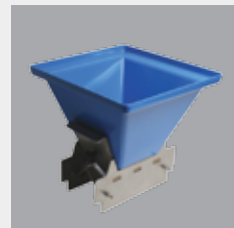
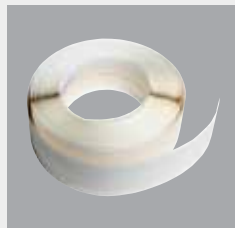
- **EASILY SCORES AND SNAPS** faster installation and lower labor costs
- **ENHANCED ACOUSTICAL PERFORMANCE** STC ratings of 50 and greater
- **ENHANCED FIRE RESISTANCE** Available in 5/8" (15.9 mm) Type X, UL/cUL Classified and ULC Listed
- **MOLD RESISTANCE** Best possible score per ASTM D3273
- **LOW-EMITTING MATERIAL** GREENGUARD Certified
- **HIGH-DENSITY CORE** Provides increased mass
- **ABUSE RESISTANCE** Surface Abrasion: 2 / Soft Body Impact: 1
- **SINGLE-LAYER CONSTRUCTION** Maximizes acoustic performance without complex techniques
- **INDUSTRY-FIRST HEALTH PRODUCT DECLARATION (HPD) AVAILABLE**



NO-COAT® Structural Laminate Drywall Corner System

THE NO-COAT® STRUCTURAL DRYWALL CORNER SYSTEM

The NO-COAT Structural Laminate (SLAM™) design is a revolutionary drywall corner system that delivers superior strength and durability, saves labor and mud, and eliminates costly callbacks. The total system includes rolls, pre-cut stick lengths, arch sticks, tools and accessories for easy installation and flawless results.



SilentFX® QuickCut Fire and Acoustic Assemblies

1/2" [12.7 mm] SILENTFX® QUICKCUT – WOOD STUD SYSTEMS

A 2"x4" [38x89 mm] wood studs 16" [406 mm] o.c.

ONE SIDE

B 1/2" [12.7 mm] SilentFX® applied with 1-1/4" [32 mm] type W screws 16" [406 mm] o.c.

OPPOSITE SIDE

C 1/2" [12.7 mm] CertainTeed Regular applied with 1-1/4" [32 mm] type W screws 16" [406 mm] o.c. All joints staggered.

D 3-1/2" [90 mm] CertainTeed Thermal & Acoustical Fiber Glass Insulation or equivalent.

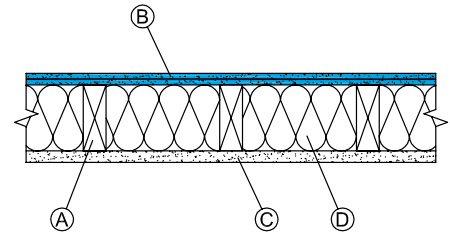
STC RATING

42

OL 11-0630

FIRE RATING

N/A



5/8" [15.9 mm] SILENTFX QUICKCUT - WOOD STUD SYSTEMS

A 2"x4" [38x89 mm] wood studs 24" [610 mm] o.c.

ONE SIDE

B 5/8" [15.9 mm] SilentFX® QuickCut applied with 1-1/4" [32 mm] type W screws 12" [300 mm] o.c.

OPPOSITE SIDE

C 5/8" [15.9 mm] CertainTeed Type X applied with 1-1/4" [32 mm] type W screws 12" [300 mm] o.c. All joints staggered.

D 3-1/2" [90 mm] CertainTeed Thermal & Acoustical Fiber Glass Insulation or equivalent.

STC RATING

51

OL 15-0503

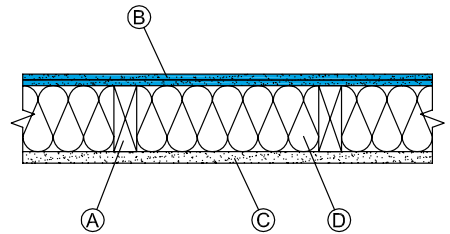
FIRE RATING

1 hr.

UL U309

ULC W313

GA WP 3243



A 2"x4" [38x89mm] wood studs 24" [610 mm] o.c.

ONE SIDE

B 5/8" [15.9 mm] SilentFX® QuickCut applied with 1-1/4" [32 mm] type W screws 12" [300 mm] o.c.

OPPOSITE SIDE

C 5/8" [15.9 mm] SilentFX® QuickCut applied with 1-1/4" [32 mm] type W screws 12" [300 mm] o.c.

D 3-1/2" [90 mm] CertainTeed Thermal & Acoustical Fiber Glass Insulation or equivalent

STC RATING

54

OL 15-1110

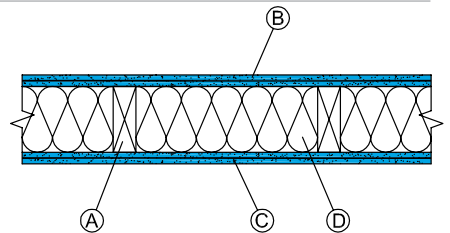
FIRE RATING

1 hr.

UL U309

ULC W313

GA WP 3243



A 2"x4" [38x89mm] wood studs 16" [406 mm] o.c. staggered 8" [200 mm] o.c. on 6" [150 mm] plates.

ONE SIDE

B 5/8" [15.9 mm] SilentFX® QuickCut applied with 1-1/4" [32 mm] type W screws 12" [300 mm] o.c.

C 3-1/2" (90 mm) CertainTeed Thermal & Acoustical Fiber Glass Insulation or equivalent

OPPOSITE SIDE

D 5/8" [15.9 mm] CertainTeed Type X applied with 1-1/4" [32 mm] type W screws 12" [300 mm] o.c. All joints staggered

E 3-1/2" [90 mm] CertainTeed Thermal & Acoustical Fiber Glass Insulation or equivalent

STC RATING

55

OL 15-1112

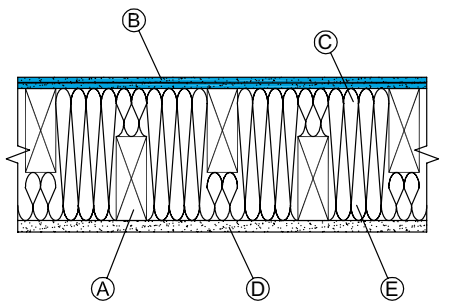
FIRE RATING

1 hr.

U305, U340

ULC W313

GA WP 3317



*Systems tested for SilentFX® are also compatible for SilentFX® QuickCut.



ASK ABOUT ALL OF OUR OTHER CERTAINTEED® PRODUCTS AND SYSTEMS:

ROOFING • SIDING • TRIM • DECKING • RAILING • FENCE
GYPSUM • CEILINGS • INSULATION

www.certainteed.com

<http://blog.certainteed.com>

CertainTeed Corporation
20 Moores Road
Malvern, PA 19355

Professional: 800-233-8990

Consumer: 800-782-8777

© 12-2015 CertainTeed Gypsum.
Printed in U.S.A. on recycled paper. CTG-2847/3M

